

Team Information



Babe Ruth Southwest

13-15 Year Old

Regional Tournament

July 20th – July 25th, 2017

Tournament Site:

Robert E. Russell Sports Complex

Hosted by:

Petal Baseball Association

Petal, Mississippi

Babe Ruth Southwest Regional Tournament

13-15 Year Old

July 20, 2017

Petal, Mississippi

CONGRATULATIONS

On behalf of Petal Baseball Association Babe Ruth and the City of Petal, we would like to congratulate the Babe Ruth Baseball State Tournament winners. We are looking forward to your upcoming participation in the Southwest Regional Tournament. We, along with the City of Petal, are proud to be hosting this year's summer classic. It is important to each of us that your team, parents, and supporters have a great stay while visiting Petal and the Robert E. Russell Sports Complex. If there is anything we can do to make your stay more enjoyable, please do not hesitate to ask anyone on our committee. We look forward to meeting each of you and seeing some great baseball games!

Please review this packet in order that everyone will have an understanding of the activities and their responsibilities. We encourage you to visit our website, www.petalbaseballassociation.com for information regarding the tournament or if you have any other questions, please contact us.

The tournament bracket will be available one (1) week prior to the starting date. Brackets will be emailed to the Team Managers and posted on the Southwest Region website, www.brlswregion.com. The brackets will be updated daily.

We want to wish "good luck" to all the teams participating in the 2017 Southwest Regional Tournament! The winner of this tournament will proudly represent the Southwest Region in the 15 Year Old Babe Ruth World Series in Lawrenceburg, Tennessee, beginning August 10th, 2017.

Sincerely,

Derek Hall, Host Site Tournament Director
Petal Baseball Association
director@petalbaseballassociation.com
(601) 274-0708 cell

Babe Ruth Southwest Regional Tournament

13-15 Year Old

Petal, Mississippi

Team Check-in

Date: Thursday, July 20th, 2017

Location: Petal YMCA
547 Hillcrest Loop
Petal, MS 39465

| | |
|------------------------------------|---------------------|
| Petal – Host | 10:30 am – 11:00 am |
| State Champion from Mississippi | 11:00 am – 11:30 am |
| State Champion from Louisiana | 11:30 am – 12:00 pm |
| State Champion from Alabama | 12:00 pm – 12:30 am |
| State Champion from South Arkansas | 12:30 am – 1:00 pm |
| State Champion from North Arkansas | 1:00 pm – 1:30 pm |
| State Champion from East Texas | 1:30 pm – 2:00 pm |
| State Champion from West Texas | 2:00 pm – 2:30 pm |

Call Derek Hall (601) 274-0708 1 hour before arrival. You must arrive with entire team.

Babe Ruth Southwest Regional Tournament

13-15 Year Old

Petal, Mississippi

Tournament Credentials

How to Assemble Your Tournament Credentials

Step 1

Access your account at BabeRuthLeague.org. Your league president or appointed officer will be able to help you with gaining access to your account.



Step 2

Start your Credentials book by using a 1/2" ring binder that you can find in an office supply store.

Step 3

Place clear sheet protectors for the documents inside the binder. When using Babe Ruth ID Cards, use "business card" sheet protectors to hold the cards inside the binder. Quick Note: Babe Ruth ID Cards are available for purchase through your roster tool. Simply select the players you need ID Cards for and supply the shipping information. You can have your cards sent back Next Day Air, 2nd Day Air or regular Ground.



Step 4

Insert your league's LOE (Letter of Eligibility). This is approved by your State Commissioner and available once approved for printing from your league's Data Center account. If you don't have the option to print the LOE, contact your State Commissioner. Commissioners will not be able to approve LOE's until after June 5th of each year. See LOE section for step-by-step instructions on obtaining your LOE.



Step 5

Insert a copy of your tournament team roster in the binder. If you have any Add/Drops that are made on your tournament roster after June 30th, please be sure to put the Add/Drop form as well as your approved letter from Headquarters approving your Add/Drop in the binder. Quick Note: Only Add/Drop forms that are with a letter from Headquarters giving specific approval are valid. Also, remember



that when you drop a player you can only add one player. Your roster must stay the same size throughout the tournament trail. You must have an official roster from BabeRuthOnline.com.

Step 6

Insert a copy of your league's Certificate of Insurance for Accident and Liability Insurance. If you have Babe Ruth insurance and your league took both Accident and Liability coverage with Babe Ruth, they will both appear together on the certificate form.

Step 7

Insert your Babe Ruth ID Cards. Quick Note: Remember to order your ID Cards when doing your rosters online. You may use original birth certificates in place of ID Cards; however, notarized copies of birth certificates will not be accepted. See ID Cards section for ordering instructions.



Babe Ruth Southwest Regional Tournament

13-15 Year Old

Petal, Mississippi

Tournament Credentials

Step 8

Insert Consent for Treatment forms. You can print out Treatment Forms from the Babe Ruth Website! Quick Note: Be sure to have 1 Consent form for each player on the roster. The Consent for Treatment form can be found under League Resources on BabeRuthLeague.org.



Step 9

Place a printed copy of your team photo, in uniform, in your binder. Please remember that this photo may also be used for program books and other publications as you advance in the tournament trail. Make sure to have a good photo taken. Quick Note: You will be uploading a photo when you do your rosters online as well. Remember only players and coaches that are on the official tournament roster are permitted in the photo.

www.BabeRuthLeague.org

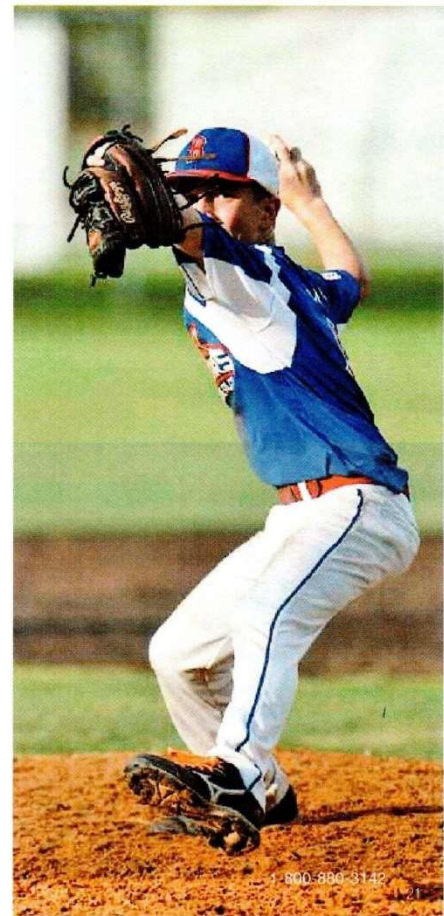
Step 10

Place Certificates of Certification for each manager and coach that has successfully completed the Coaches Certification Program. Quick Note: Visit www.baberuthcoaching.com for information on how you can enroll in this superb training program.

Step 11

Check List

- Did I order Official Emblems or the Cap Emblem option for my players and coaches?
- Do I want to order District, State or Regional Champion and Runner-Up Pins?
- Does my team have the schedule for games as well as the contact numbers for the host league and tournament director?
- Did I send all of my required paperwork to Headquarters?
- Do my coaches have copies of the rule book?
- Do my team managers and coaches have rule books?



- The above listed credentials must be completed and turned in to tournament officials at check in meeting. They will be returned to your team when you are through competing.
- We will also need a 3 x 5 state flag to be turned in with your tournament credentials to be turned in at check in.

Babe Ruth Southwest Regional Tournament

13-15 Year Old

Petal, Mississippi

Opening Ceremony and Banquet

Date: Thursday, July 20th, 2017

Location: Robert E. Russell Sports Complex
605 Hillcrest Loop
Petal, MS 39465

Time: 6:00 pm Opening Ceremony (Banquet follows opening ceremony)

Teams should be dressed in uniform top, hat and khaki shorts with no open toe shoes. Teams should arrive at the Complex by 5:30pm. There will be no cell phones allowed at these events for Players and Coaches. Parents will be allowed to take pictures during the event at appropriate times. A schedule of events will be sent to coaches before the event.

Once Opening Ceremonies are complete we will move across the street to the YMCA for our Banquet. Start time for Banquet will be 7PM.

The banquet will have complimentary tickets for the players and coaches on the team roster. There will be tickets available for pre-purchase at \$10.00 per guest. Coaches will be sent a preorder form for food tickets for players, coaches and parents (there will be a limited amount of extra meals for people who didn't preorder and will be on a first come first serve basis) as well as a preorder form for Regional T-Shirts. Dress for the banquet will be business casual for parents and guests.

Babe Ruth Southwest Regional Tournament

13-15 Year Old

Petal, Mississippi

Commissioner's Breakfast

Date: Friday, July 21st, 2017

Location: Magnolia State Bank

1130 Evelyn Gandy Pkwy
Petal, MS 39465

Time: 7:00 am

For: Umpires, Managers, Coaches, and Tournament Personnel

This event will take place on the 2nd Floor of the Bank in their meeting room. The bank will open for business at 8:30AM so please park next door in the McAlister's Deli parking lot.

Babe Ruth Southwest Regional Tournament

13-15 Year Old

Petal, Mississippi

Umpires Meeting

Date: Friday, July 21st, 2017

Location: Premier Orthopaedics Field
Robert E. Russell Sports Complex
605 Hillcrest Loop
Petal, MS 39465

Time: 8:30 am

For: Umpires, Managers, Coaches, and Tournament Personnel

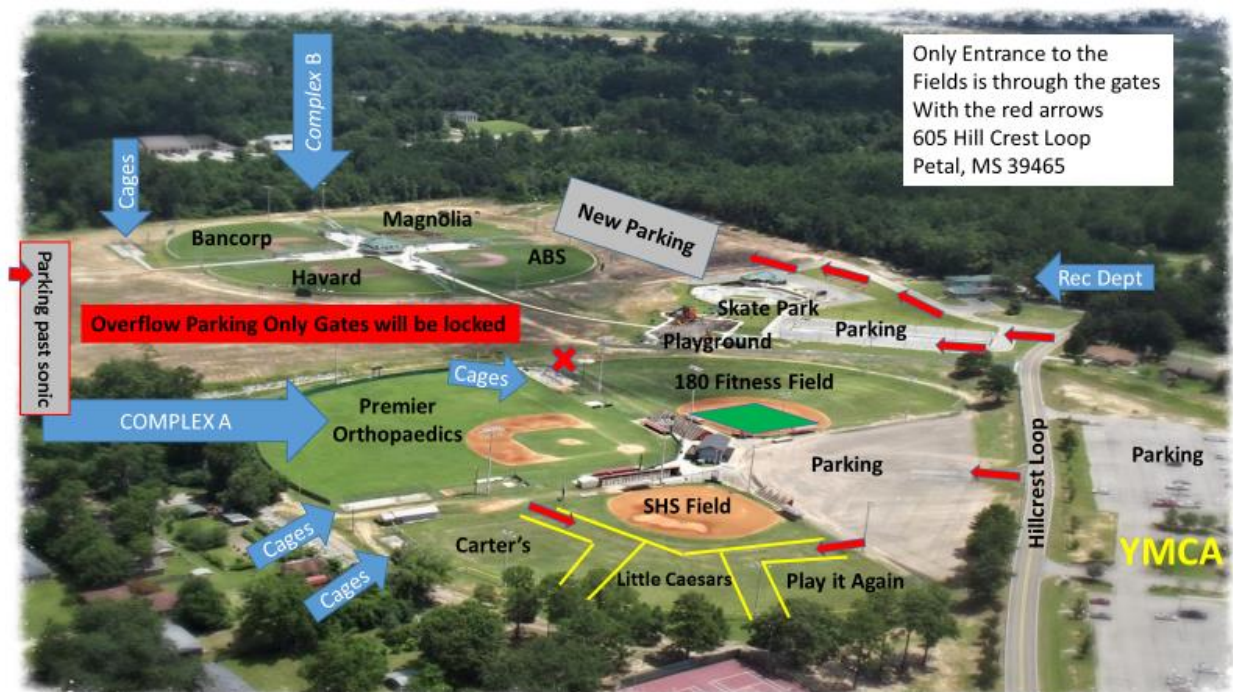
This meeting will be on Premier Orthopaedics Field to go over any ground rules for this tournament. Plan on 1st game to be at 10AM.

Babe Ruth Southwest Regional Tournament

13-15 Year Old

Petal, Mississippi

Host Field for Southwest Regional Tournament



Location: Premier Orthopaedics Field
Robert E. Russell Sports Complex

Babe Ruth Southwest Regional Tournament

13-15 Year Old

Petal, Mississippi

605 Hillcrest Loop

Petal, MS 39465

Babe Ruth Southwest Regional Tournament

13-15 Year Old

Petal, Mississippi

Host Site Tournament Director:

Derek Hall

601-274-0708 Cell

director@petalbaseballassociation.com

Co-Host Tournament Director:

Brian Hall

601-402-1333 Cell

brianroyhall78@gmail.com

SWR Tournament Director:

Darrin Deidrich

504-439-3593

darrin_34@cox.net

In case of unauthorized absence:

Contact: Derek Hall (Tournament Host Director)

Darrin Deidrich (SWR Tournament Director)

E-mail: director@petalbaseballassociation.com

In case of illness or injury:

Contact: Team Manager (1st)

Darrin Deidrich (2nd)

Derek Hall (3rd)

Babe Ruth Southwest Regional Tournament

13-15 Year Old

Petal, Mississippi

Important Information

Tournament Program:

Please forward a 5x7 color team picture to director@petalbaseballassociation.com
The deadline for picture to make the program is July 17, 2017.

State Flag:

Each team is required to turn in their state flag (3' x 5') with your team's credentials at the Regional Tournament check in.

Practice Schedule:

A practice schedule will be given to the teams at check in for use of the One80 Fitness Field and Batting cage.

Babe Ruth Southwest Regional Tournament

13-15 Year Old

Petal, Mississippi

Team Lodging Information

Motel/hotel rooms for managers/coaches/players or parents WILL NOT be provided by the Tournament Host Site, but each team will be given information as to most all lodging available in the surrounding community.

Suggested Lodging in the Hattiesburg Area:

HOST HOTEL #1 Holiday Inn and Suites

10 Gateway Drive

Hattiesburg, MS 39401

601-296-0302

www.holidayinn.com – Hattiesburg MS, Location

Limited number of rooms blocked at \$104 plus tax per night mention **Petal Baseball Association**

HOST HOTEL #2 Comfort Suites

122 Plaza Dr.

Hattiesburg, MS 39402

601-261-5555

www.choicehotels.com – Hattiesburg MS, Location

Limited number of rooms blocked at \$99 plus tax per night mention **Petal Baseball Association**

Other area Hotels

Microtel Inn & Suites

www.wyndhamhotel.com

105 Westover Drive Hattiesburg, MS 39402

601-450-1592

Babe Ruth Southwest Regional Tournament

13-15 Year Old

Petal, Mississippi

Courtyard by Marriott

www.marriott.com

119 Grand Drive Hattiesburg, MS 39402

601-268-3050

Hilton Garden Inn

www.hiltongardeninn3.hilton.com

133 Plaza Drive Hattiesburg, MS 39402

601-261-3770

Home 2 Suites by Hilton

www.home2suites3.hilton.com

116 Plaza Drive Hattiesburg, MS 39402

601-261-3800

If you find rooms that are located in other hotel/motels besides the ones listed, please check with one of the local tournament officials about the facility's acceptability.

Babe Ruth Southwest Regional Tournament

13-15 Year Old

Petal, Mississippi

Manager and Player Game Information

Game Conduct/Rules:

1. All games will be played under the rules and regulations covered in the professional Baseball Rule Book, Rules and regulations of 2017 Babe Ruth Baseball. Brackets for Regional Tournaments are preset at the Regional meeting each year. Team at bottom rung of the bracket will be the Home team. The on deck circle closest to your dugout will be the one used by your team. Home team will use the 1st base dugout and visitor will use the 3rd base dugout.
2. Games will be kept moving at all times; with no unnecessary delays, such as mound conferences by players. Manager trips will be per rule. Always have a back up catcher ready to warm up the pitcher if your catcher is not ready between innings.
3. Anyone, player, coach, or manager, acting in an un-sportsmanlike manner shall be removed from the playing field or ball park immediately and could be disqualified from the tournament. If a player is ejected from the game he must leave the ball park accompanied by an adult. If his parents are not present he will be accompanied by his manager or coach.
4. Managers, coaches, and players shall wear full uniforms according to baseball rules. While in uniform, neatness is a must. When at the ball park, your shirt tail must be tucked in and your cap worn properly. When taking the field to warm up for your game, no warm up or hitting shirts are allowed.
5. Protective headgear must be worn at bat while running the bases. Equipment, bats, gloves, helmets, etc...should be stacked neatly in their proper places at all times (inside the dugout).

6. Only Official managers, coaches, players, and bat-boys will be allowed in the dugouts. Players and coaches (two coaches boxes offensively) must stay inside the dugouts. No team will be allowed to kneel or stand along the baseline to watch their opponent team warm up. There will no cell phones allowed in the dugouts.
7. Masks with throat protector will be required at all times when warming up the pitchers whether on the field or in the bullpen. A player protecting a bullpen must wear headgear.
8. No tobacco products will be permitted on the playing field, dugout, rest rooms, or within the confines of the ball park spectator fenced area (must be outside the main gate).
9. The Southwest Regional Commissioner or his Assistant shall have the authority to remove any player, coach, or manager for actions detrimental to Babe Ruth Baseball. Any misbehavior or misconduct on or off the field could cause disqualification of a manager, player, coach or the entire team from the Tournament. The Tournament is under the jurisdiction of the Assistant Southwest Regional Commissioner.
10. The protest committee shall have final authority in all protests. A Rule violation is the only thing that can be protested (judgment calls are not to be protested).
11. The protest committee shall be appointed by the Tournament Director in accordance with the Assistant Southwest Regional Commissioner.
12. Players must be in uniform at the field, one hour before their scheduled game time. Lineup cards are due one (1) hour before the start of your game. Bring the lineup cards to the Press Box filled out completely.
13. The ten (10) minutes immediately prior to game time will be for the introduction of players, umpires, and any special guests.

Coaches Notes: